

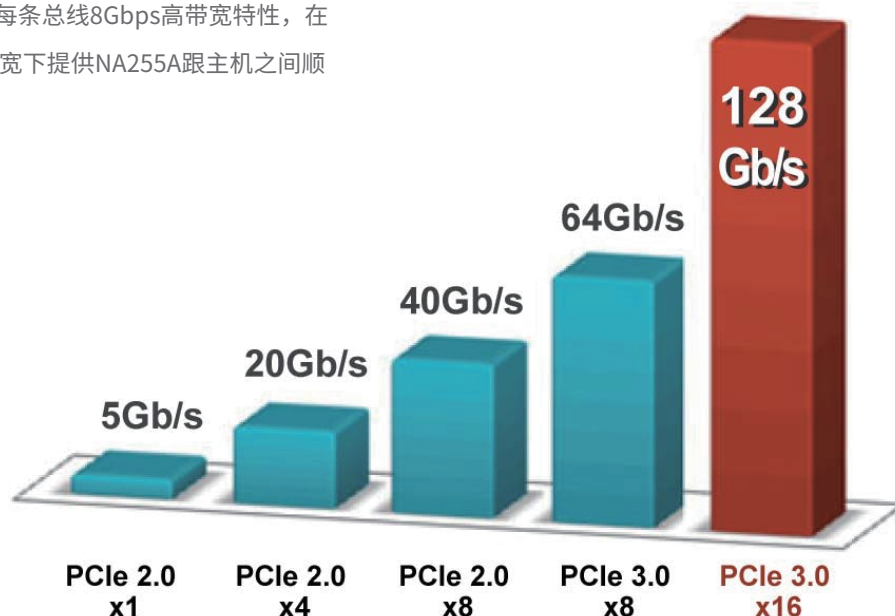
NA255A

进阶款 - 外接式桌上型PCIe 3.0 x16 (128Gbps)、
图形处理卡(GPU卡)扩充箱



128Gbps Bandwidth – PCIe Gen3 x16

主机接口端，采用外接PCIe 3.0 每条总线8Gbps高带宽特性，在总共16条总线高达128Gbps的超高带宽下提供NA255A跟主机之间顺畅无碍的数据传输。



Up to 4 Dual-Width GPU Cards

NA255A设计有4槽PCIe Gen3 x16的插槽(x8的讯号)^{注1}，可容纳高达4张的双宽且全长的GPU卡，用户可随着自己的需求安装任何单宽或双宽卡，并且不论PCIe卡是Gen3、Gen2 还是x1, x4, x8, x16，NA255A都展现出最佳的兼容特性。



注1 淮进科技(Netstor)致力打造高性价比的产品，根据专业用户的测试报告，将GPU卡安装于x16或者x8讯号的插槽比较下，效能仅有1%不同。数据参考 AnandTech 与 TechPowerUp。

Great Sufficient Powering

1200W 单电源或 1350W 冗余电源供应器

专为外接多张GPU应用的机架式NA265A，可选购内装高达1200W的高效能单电源，或者1350W 2+1冗余电源供应器，专注提供足够的电源给高阶需求高瓦数的GPU卡，让GPU能在充足并稳定的电源提供中发挥最优效能。冗余电源提供二十四小时连续不间断地运行各式复杂的应用程序和高效能计算。

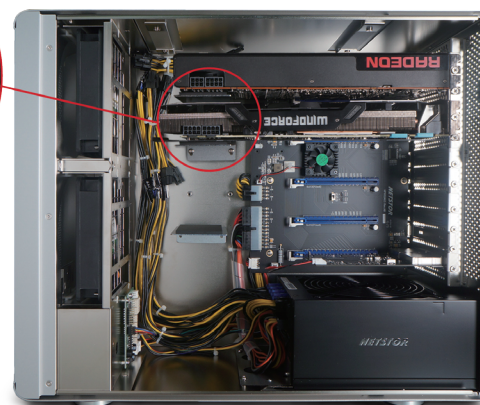
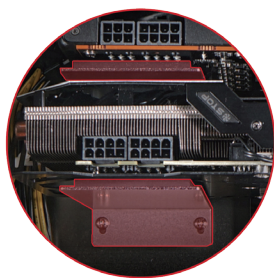
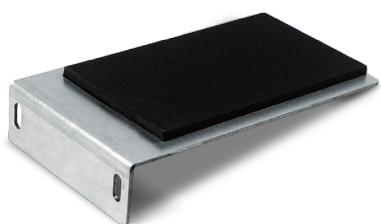
多弹性的6+2 pin PCI-E 电源接头 PCI-E Power Cables

贴心内建8组的6+2pin的PCIe电源接头给任何电源需求组合的GPU卡，不论是6 pin 还是8 pin，一组还是两组，多弹性的多弹性的6+2 pin PCI-E电源接头都能满足您的需求。



贴心的GPU支架

我们理解高阶的GPU卡又大又重，因此我们特别附上4片的L型铁片来帮您撑住那些长达28~30公分的GPU大卡。让您的高阶GPU卡能够稳稳地安置在NA255A的机箱中。



高效能、超级运算



Computational Finance

GPU acceleration from Netstor NA265A offers financial service organizations the capability to speed up their business processing and provide better analytics. High-end GPUs within NA265A allow complicated risk calculations at the trader level to run in seconds, allowing real-time risk to be business as usual. Value at Risk, Counterparty Risk, and Initial and Lifetime Margining calculations are the types of calculations benefiting from NA265A GPU processing.



Data Science

Increasing number of data scientists are using multiple high-end graphics cards in Netstor GPU enclosure for large data analytics to make better and real-time business decisions. Typical application case in big data analytics includes machine learning, deep learning, search, and sorting.



Medical Imaging

Medical imaging takes the advantage of multi-GPU computing to get acceleration. Common use case in medical imaging covers accelerating Advanced MRI Reconstruction and Computed Tomography (CT) Reconstruction. The use of multiple high-end graphics card with Netstor GPU enclosure in this field is matured and there have been many such applications in the medical area.

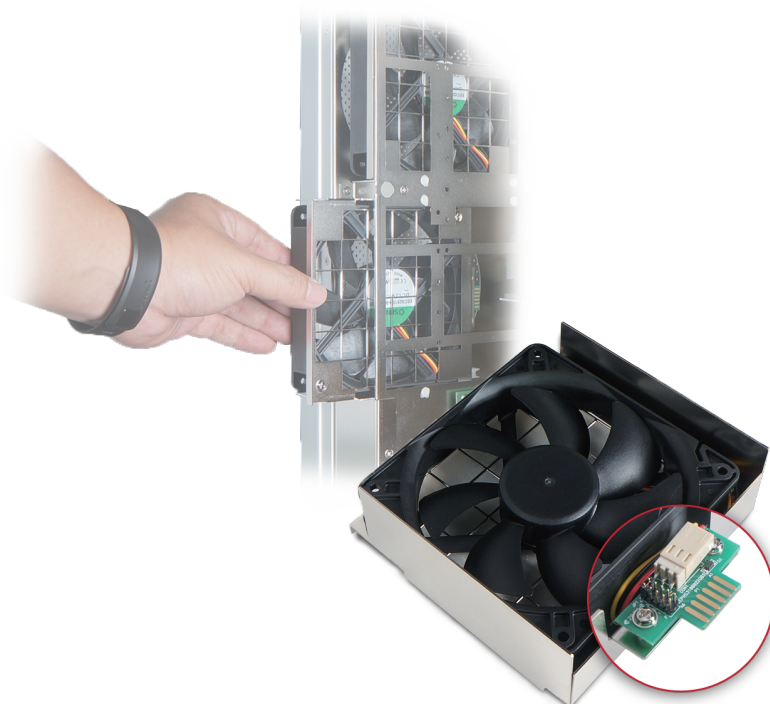


Numerical Analytics

Professionals can use specialized tools such as MATLAB, Mathematica, and LabView...etc. through the utilization of multi graphics cards in Netstor GPU enclosure for accelerating the numerical analytics computing. Reliable statistics show computing capability of multi-GPU is more than ten times faster than CPU alone.

可调式风扇转速

内建两个大型12x12公分的前风扇模块，每个风扇模块全速转时可提供75CFM的散热效率，可提供机箱内的PCIe卡绝佳的散热效果。使用者可依自身需求在散热跟静音中自行调整风扇转速。



绝佳的GPU卡兼容性

不论您的卡是来自于Nvidia、AMD还是第三方OEM的GPU卡，NA255A都提供绝佳的产品兼容性。



RTX 2080Ti *	GP100	RX 580	WX 9100
RTX 2070	P6000	RX 570	WX 7100
TITAN X (Pascal)	P5000	RX 480	WX 5100
GTX 1080Ti	M6000	RX 470	W9100
GTX 1080	M5000	R9 Fury X	W9000
GTX TITAN X	M4000	R9 Nano	W8100
GTX 980 Ti	K6000	R9 390X	W8000

* Note: Requested Model NA255A-1500 (Power Supply provides 1500W for up to 4 GPU cards)

详细规格

机座外观 (Chassis)	桌上型机箱	
主机接口	外接式 PCIe 3.0 x16 端口，资料带宽最大 128Gb/s	
PCIe 插槽数	四个 PCI Express 3.0 ×8 （×16插槽）	
允许 PCIe 卡长度	可安装PCIe全长(32.1公分)/全高卡	
机箱外部 LED 指示灯	电源开启 – 蓝灯 风扇正常 – 绿灯; 风扇故障 – 红灯 温度正常 – 绿灯; 温度高于55°C – 红灯	
风扇	前方两个 120×120×25 mm 冷却风扇 75 CFM each fan @ full speed	
警示	风扇故障或温度过高 (超过 55°C) 时，蜂鸣器鸣叫	
材质	坚固机身结构与高雅时尚的铝制外壳	
电源供应器	型号 : NA255A-XGPU Universal Single 1200W (High-Efficiency & Low Noise) Input: 90~230 VAC/50-60 HZ 12V @ 100A (Note: 1300W peak power @ 12 seconds)	型号 : NA255A-1500 Universal Single 1500W (High-Efficiency & Low Noise) Input: 90~230 VAC/50-60 HZ 12V @ 120A (Note: 1600W peak power @ 12 seconds)
产品尺寸	450 (D) x 175.8 (W) x 374 (H) mm 17.7 (D) x 6.9 (W) x 14.7 (H) inch	
操作系统支持	OS Independent	
Host Requirement	One PCIe 3.0 x16 slot and system has sufficient PCIe resources Note: 1. The tower MacPro under 10.9 Mavericks and 10.10 Yosemite only supports up to 2 nVidia GPU cards. 2. Now the tower MacPro under 10.11 El Capitan is able to support up to 3 nVidia GPU cards again.	
出货包装内容物	机台本体 x 1 PCIe 3.0 x16 host adapter card x 1 PCIe 3.0 x8 cable(1.5 meter) x 2 电源线 x 1	

Accessories

NA255A-XGPU

Desktop PCIe Gen3 Expansion Enclosure, **1200W Single** Power Supply with extra 4* PCIe power connectors 6+2 pin & 4* PCIe 6 pin for up to 4 double width GPU cards, with one PCIe Gen3 x16 host adapter and two PCIe x8 cables

NA255A-1500

Desktop PCIe Gen3 Expansion Enclosure, **1500W Single** Supply with extra 8* PCIe power connectors 6+2 pin for up to 4 double width GPU cards, with one PCIe Gen3 x16 host adapter and two PCIe x8 cables

NP970AG3-H

Extra PCIe Gen3 x16 Host Adapter(full height & half Length)

AAML6815

Extra PCIe 3.0 x8 cable length in 1.5 meter